



Warbler Way, Langold, Worksop, Nottinghamshire S81 9FY

 3

 1

 1

 EPC

£1,100 PCM

PINEWOOD



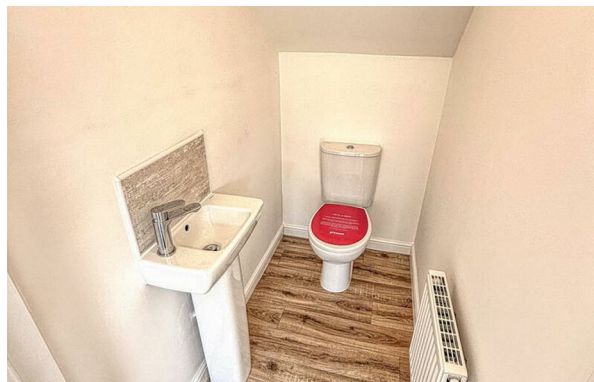


**Warbler Way  
Langold  
Worksop  
Nottinghamshire  
S81 9FY**

**£1,100 PCM**

**3 bedrooms  
1 bathroom  
1 receptions**

- Brand new semi-detached house
- Modern kitchen with dining space
- Ground floor WC for convenience
  - Double doors to rear garden
- Driveway and garage included
  - Three spacious bedrooms
  - A spacious reception room
- Located in Langold, Worksop
  - Close to local amenities
- Viewing highly recommended







**\*\*BEAUTIFULLY FINISHED SEMI AND READY FOR FAMILIES WANTING A MODERN HOME\*\***

**\*\*LANDLORD OFFERING £200 OFF OF FIRST MONTHS RENT INCENTIVE\*\***  
Warbler Way, Langold, Worksop, a place to be and live in this brand new semi-detached house presents an excellent opportunity for those seeking a modern family home. With three well-proportioned bedrooms, this property is ideal for families or individuals looking for extra space.

Upon entering, you are greeted by an inviting reception room, perfect for entertaining guests or enjoying quiet evenings with family. The heart of the home is undoubtedly the modern fitted kitchen, which boasts ample space for dining, making it a delightful area for family meals and gatherings.

The property also features a well-appointed bathroom, ensuring convenience for all residents. Additionally, the house offers parking for up to three vehicles, a valuable asset in today's busy world.

This home combines contemporary living with a welcoming atmosphere, making it a perfect choice for anyone looking to settle in a peaceful yet accessible location. With its modern amenities and thoughtful design, this property is ready to welcome its new owners. Don't miss the chance to make this lovely house your new home.

**\*\*If you would like to view this property, or apply for it, please click the 'Request Details' button on Rightmove and enter your information\*\***

### **Living Room**

16'2" x 10'0" (4.93m x 3.05m)

This bright living room extends comfortably across the front of the house, featuring two windows that allow natural light to fill the space. The neutral decor and soft carpeting create a warm and inviting atmosphere, ideal for relaxing or entertaining guests.

### **Kitchen/Diner**

10'10" x 13'6" (3.30m x 4.11m)

The kitchen/diner offers a well-lit, practical space fitted with modern cabinets in a muted shade, complemented by wood-effect flooring. A built-in oven and four-burner gas hob are integrated seamlessly, while the space provides ample room for dining and access to the rear garden via double doors.

### **WC**

5'6" x 3'2" (1.68m x 0.97m)

The separate WC is conveniently positioned on the ground floor. It features a compact hand basin with tiled splashback and a WC, all set against neutral walls and wood-effect flooring for easy maintenance.

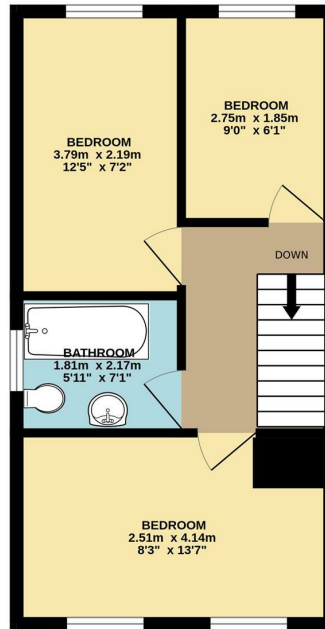
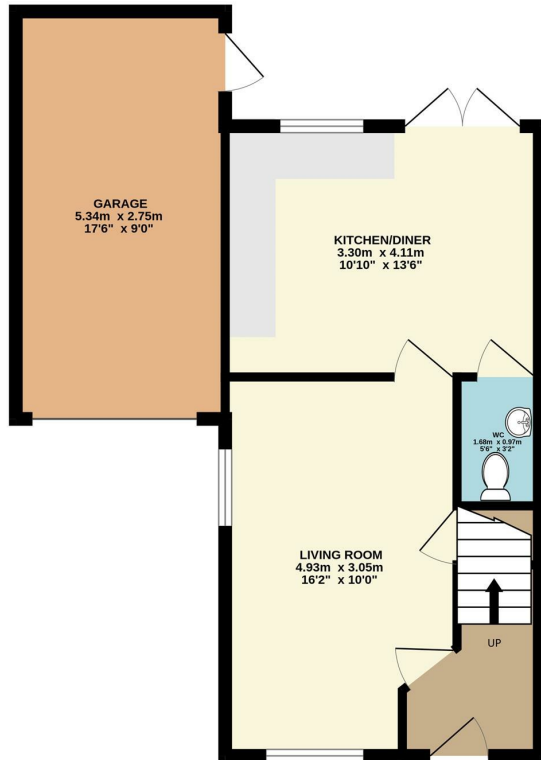
### **Bedroom 1**

8'3" x 13'7" (2.51m x 4.14m)

Bedroom 1 is the largest of the three bedrooms, comfortably accommodating a double bed and more. It benefits from two windows that brighten the room with natural light, complemented by neutral carpeting and simple decor, creating a restful space.

GROUND FLOOR  
48.6 sq.m. (523 sq.ft.) approx.

1ST FLOOR  
32.4 sq.m. (349 sq.ft.) approx.



TOTAL FLOOR AREA : 81.1 sq.m. (872 sq.ft.) approx.  
Whilst every attempt has been made to ensure the accuracy of the floorplan contained here, measurements of doors, windows, rooms and any other items are approximate and no responsibility is taken for any error, omission or mis-statement. This plan is for illustrative purposes only and should be used as such by any prospective purchaser. The services, systems and appliances shown have not been tested and no guarantee as to their operability or efficiency can be given.  
Made with Metropix ©2025

Energy Efficiency Rating		
	Current	Potential
Very energy efficient - lower running costs		
(92 plus) <b>A</b>		
(81-91) <b>B</b>		
(69-80) <b>C</b>		
(55-68) <b>D</b>		
(39-54) <b>E</b>		
(21-38) <b>F</b>		
(1-20) <b>G</b>		
Not energy efficient - higher running costs		
England & Wales	EU Directive 2002/91/EC	

### Bedroom 2

12'5" x 7'2" (3.79m x 2.19m)

Bedroom 2 is a charming, well-lit room a window providing plenty of daylight. Its compact size makes it ideal for use as a single bedroom or a study. Neutral tones and carpeted flooring complete the look.

### Bedroom 3

9'0" x 6'1" (2.75m x 1.85m)

Bedroom 3 is the smallest bedroom, positioned at the rear of the house. It features a single window and carpeted flooring, suitable for use as a guest room or home office.

### Bathroom

5'11" x 7'1" (1.81m x 2.17m)

The bathroom is fitted with a bath and shower combination, a WC, and a pedestal basin. The modern tiling around the bath and the wood-effect flooring add a contemporary touch to this practical family bathroom.

### Rear Garden

The rear garden enjoys a generous lawn space enclosed by timber fencing, providing a secure and private outdoor area for relaxation or play. Access is available from the kitchen/diner through double doors, allowing for natural light to flood the interior during warmer months.

### Garage

17'6" x 9'0" (5.34m x 2.75m)

The garage provides secure parking and storage, with direct access from the kitchen/diner. It measures 5.34 metres in length by 2.75 metres in width, offering ample room for a vehicle and additional storage needs.

### DISCLAIMER RENTAL

These particulars do not constitute part or all of a contract. While we endeavour to make our particulars fair, accurate and reliable, they are only a general guide to the property the photos are for reference purpose only, the white goods advertised may not be in situ and and if there are any points which are of particular importance to you or any particular white goods required please check with the office and we will be pleased to check the position on these

Mansfield branch  
24 Albert Street  
Mansfield, NG1  
01623 621001

Clowne branch  
26 Mill Street,  
Clowne, S43 4JN  
01246 810519

Clay Cross branch  
20 Market Street,  
Clay Cross, S45 9JE  
01246 251194

Chesterfield branch  
33 Holywell Street,  
Chesterfield, S41 7SA  
01246 221039

PINEWOOD

